

## Philco Radio & Television Corp.

Model: 42-PT-7 (121,122)

Chassis:

Year: Pre 1945

Power:

Circuit:

IF:

Tubes:

Bands:

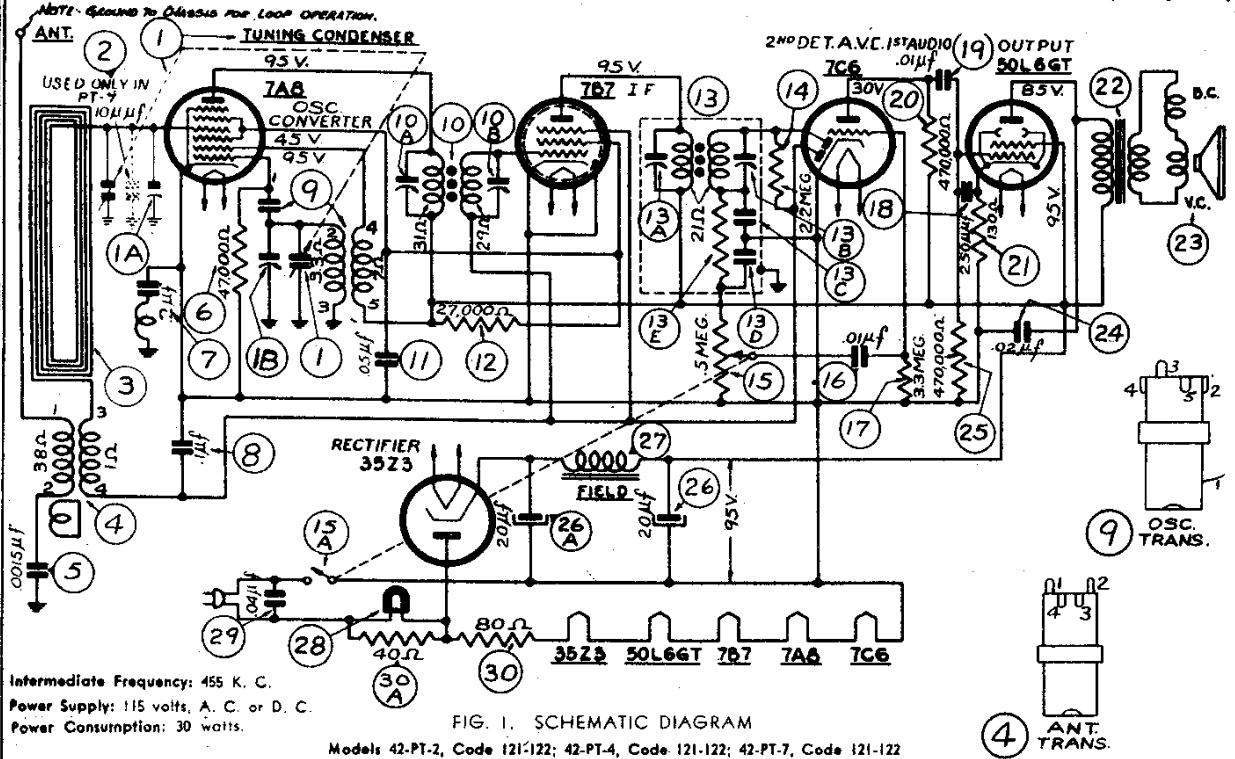
### Resources

[Riders Volume 14 - PHILCO 14-17](#)

[Riders Volume 14 - PHILCO 14-18](#)

PHILCO RADIO & TELEVISION CORP.

MODELS 42-PT-2, 42-PT-4, 42-PT-7 (121, 122)



The D. C. Voltages indicated at the tube elements in the above diagram were measured with a 1000 ohms per voltmeter, Philco Model 027.

REPLACEMENT PARTS

| Schem. No. | Description                                       | Part No.              | Schem. No.                            | Description                     | Part No.     |
|------------|---------------------------------------------------|-----------------------|---------------------------------------|---------------------------------|--------------|
| 1.         | Tuning Condenser (PT-2, 4, 7, Code 121)           | 31-2527               | 29.                                   | Condenser (.04 mfd., 400 volts) | 30-4119      |
|            | Tuning Condenser (PT-2, 4, 7, Code 122)           | 31-2610               | 30.                                   | Filament Resistor (80 ohms)     | 33-3408      |
|            | Drive Shaft                                       | W-2151                | 30a.                                  | Filament Resistor (40 ohms)     | (Part of 30) |
|            | Mtg. Nut                                          | W-2157                | MISCELLANEOUS PARTS                   |                                 |              |
|            | Drive Cord                                        | 31-2829               | Cabinet and Loop (PT-2, code 121-122) | 76-1185                         |              |
|            | Spring                                            | 28-8954               | Back                                  | 27-9817                         |              |
|            | Mtg. Grommet                                      | 27-4610               | Mtg. Stud                             | W-2235FA9                       |              |
|            | Pointer                                           | 56-2076               | Cabinet and Loop (PT-4, code 121-122) | 76-1218                         |              |
| 1a.        | Aerial Compensator (Part of Tuning Condenser)     | 60-010137             | Back                                  | 27-9870                         |              |
| 1b.        | Oscillator Compensator (Part of Tuning Condenser) | 318-2775              | Cabinet (PT-7, code 121)              | 10883A                          |              |
| 2.         | Mica Condenser (10 mfd., used in PT-7 only)       | 318-2773              | Cabinet (PT-7, code 122)              | 10883B                          |              |
| 3.         | Loop Aerial (PT-2, Code 121-122)                  | 318-2773              | Back                                  | 27-9944                         |              |
|            | Loop Aerial (PT-4, Code 121-122)                  | 76-1196               | Mtg. Screw                            | W-2023                          |              |
|            | Loop Aerial (PT-7, Code 121)                      | 76-1196               | Cord (Power)                          | L-3199                          |              |
|            | Loop Aerial (PT-7, Code 122)                      | W-192                 | Dial Scale (PT-2, code 121)           | 27-5679                         |              |
|            | Mtg. Washer                                       | W-881                 | Dial Scale (PT-2, code 122)           | 27-5810                         |              |
| 4.         | Aerial Transformer                                | 32-3391               | Mtg. Strap                            | 56-2059                         |              |
|            | Mtg. Clip                                         | 28-5092               | Mtg. Screw                            | W-2249FA3                       |              |
| 5.         | Condenser (.0015 mfd., 200 volts)                 | 30-4621               | Dial Scale (PT-4, code 121)           | 27-5696                         |              |
| 6.         | Resistor (47,000 ohms)                            | 33-347339             | Dial Scale (PT-4, code 122)           | 27-5811                         |              |
| 7.         | R. F. Choke and Condenser (.2 mfd.)               | 76-1161               | Mtg. Strap                            | 56-2058                         |              |
| 8.         | Condenser (.1 mfd., 200 volts)                    | 30-4586               | Mtg. Screw                            | W-2249                          |              |
| 9.         | Oscillator Transformer (PT-2, 4, 7, Code 121)     | 32-3562               | Dial Scale (PT-7, code 121)           | 27-5781                         |              |
|            | Oscillator Transformer (PT-2, 4, 7, Code 122)     | 32-3539               | Dial Scale (PT-7, code 122)           | 27-5812                         |              |
| 10.        | First I.F. Transformer                            | 32-3603               | Mtg. Strap                            | 56-2066                         |              |
|            | Mtg. Nut                                          | W-1949FA3             | Knob (PT-2, code 121, 122)            | 54-4052                         |              |
| 10a.       | Primary Compensator (Part of 10)                  | (Part of 10)          | Knob (PT-4, code 121, 122)            | 27-4805                         |              |
| 10b.       | Secondary Compensator (Part of 10)                | (Part of 10)          | Knob (PT-7, code 121, 122)            | 54-4135                         |              |
| 11.        | Condenser (.05 mfd., 400 volts)                   | 30-4519               | Socket (50L6GT)                       | 27-6174                         |              |
| 12.        | Resistor (27,000 ohms)                            | 33-327337             | Socket (7A6)                          | 27-6177                         |              |
| 13.        | Resistor (130 ohms)                               | 32-3664               | Screw (Chassis Mtg. PT-2, 4)          | W-1821FA9                       |              |
| 13a.       | Primary Compensator (Part of 13)                  | (Part of 13)          | Screw (Chassis Mtg. PT-7)             | W-2065                          |              |
| 13b.       | Secondary Compensator (Part of 13)                | (Part of 13)          | Washer (Chassis Mtg. PT-2, 4)         | 28-2615                         |              |
| 13c.       | Condenser (Part of 13a and 13b)                   | (Part of 13a and 13b) | Washer (Chassis Mtg. PT-7)            | W-410                           |              |
| 13d.       | Condenser (Part of 13a and 13b)                   | (Part of 13a and 13b) |                                       |                                 |              |
| 13e.       | Resistor (Part of 13)                             | (Part of 13)          |                                       |                                 |              |
| 14.        | Resistor (2.2 megohms)                            | 33-522339             |                                       |                                 |              |
| 15.        | Volume Control                                    | 33-8434               |                                       |                                 |              |
|            | Mtg. Nut                                          | W-2157                |                                       |                                 |              |
| 15a.       | Power Switch (Part of 15)                         | 30-4572               |                                       |                                 |              |
| 16.        | Condenser (.01 mfd., 400 volts)                   | 30-4572               |                                       |                                 |              |
| 17.        | Resistor (3.3 megohms)                            | 33-533339             |                                       |                                 |              |
| 18.        | Mica Condenser (250 mfd.)                         | 60-123137             |                                       |                                 |              |
| 19.        | Condenser (.01 mfd., 400 volts)                   | 30-4572               |                                       |                                 |              |
| 20.        | Resistor (470,000 ohms)                           | 33-447339             |                                       |                                 |              |
| 21.        | Resistor (130 ohms)                               | 33-113336             |                                       |                                 |              |
| 22.        | Output Transformer                                | 32-8164               |                                       |                                 |              |
| 23.        | Speaker                                           | 36-1835-9             |                                       |                                 |              |
|            | Cone Assembly                                     | 36-4190               |                                       |                                 |              |
| 24.        | Condenser (.02 mfd., 400 volts)                   | 30-4516               |                                       |                                 |              |
| 25.        | Resistor (470,000 ohms)                           | 33-447339             |                                       |                                 |              |
| 26.        | Electrolytic Condenser (20 mfd.)                  | 30-2382               |                                       |                                 |              |
| 26a.       | Electrolytic Condenser (20 mfd.)                  | (Part of 26)          |                                       |                                 |              |
| 26b.       | Electrolytic Condenser (20 mfd.)                  | (Part of 26)          |                                       |                                 |              |
| 27.        | Field Coil                                        | 56-1346               |                                       |                                 |              |
| 28.        | Pilot Lamp                                        | 34-2669               |                                       |                                 |              |
|            | Socket Assembly                                   | 76-1177               |                                       |                                 |              |

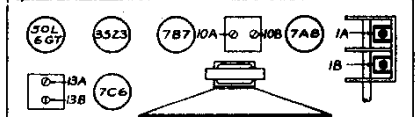


FIG. 2. COMPENSATOR LOCATIONS

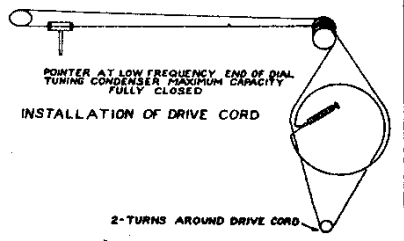


FIG. 3. DRIVE CORD ARRANGEMENT

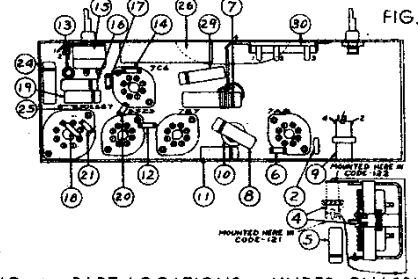


FIG. 4. PART LOCATIONS - UNDER CHASSIS

FOR ALIGNMENT SEE INDEX

MODELS 42-PT-2, 42-PT-4,  
42-PT-7  
MODELS 42-PT-10, 42-321  
MODEL 42-1004

PHILCO RADIO & TELEVISION CORP.

ALIGNMENT FOR MODELS  
42-PT-2, 42-PT-4, 42-PT-7  
42-321, 42-PT-10

When aligning the R. F. padders a loop is made from a few turns of wire and connected to the signal generator output terminals; the signal generator is then placed close to the loop of the radio.

The receiver can be adjusted in the cabinet or removed from the cabinet.

When adjusting the radio outside the cabinet the loop aerial should be placed in approximately the same position around or near the

chassis as when assembled. The aligning points on scale plate should also be used.

After connecting the aligning instruments adjust the compensators as shown in the tabulation below. Compensator locations are shown on the Schematic.

If the indicating meter pointer goes off scale when adjusting the compensators, reduce the strength of the signal from the generator.

| Operations in Order | SIGNAL GENERATOR               |              | RECEIVER                      |                 |                                                                          | SPECIAL INSTRUCTIONS |
|---------------------|--------------------------------|--------------|-------------------------------|-----------------|--------------------------------------------------------------------------|----------------------|
|                     | Output Connections to Receiver | Dial Setting | Dial Setting                  | Control Setting | Adjust Compensators in Order<br>42-321, PT-10      42-PT-2, -PT-4, -PT-7 |                      |
| 1                   | Ant. Section of tuning         | 455 K. C.    | 540 K. C. Tuning Cond. Closed | Vol. Max.       | 18A, 18B, 14A, 14B      13B, 13A, 10A, 10B                               | Note B               |
| 2                   | Loop see above instructions    | 1400 K. C.   | 1400 K. C.                    | Vol. Max.       | (6B, Note C)      (1B, Note C)                                           | Note A               |
| 3                   | Loop see above instructions    | 1500 K. C.   | 1500 K. C.                    | Vol. Max.       | (6A, Note D)      (1A, Note D)                                           |                      |

NOTE A: DIAL POINTER CALIBRATION—In order to adjust the receiver correctly, the pointer must be adjusted to track properly with the tuning condenser. To do this, turn the tuning condenser to the maximum capacity (plates fully meshed.) With the condenser in this position, set the tuning pointer on the first small line stamped in the scale plate on the left side.

NOTES FOR MODELS 42-321, -PT-10

NOTE B—Before adjusting compensators, turn down (14B) to light position. Then adjust the compensators for maximum output in the following order: 18A, 18B, 14A and 14B.

NOTE C—Turn tuning condenser until dial pointer is on the first small line stamped in the scale plate from right side of chassis. Adjust padder (6B) to maximum at this point.

NOTE D—Turn tuning condenser until dial pointer is on the second small line stamped in the scale plate from right side of chassis. Adjust padder (6A) to maximum at this point.

NOTES FOR MODELS 42-PT-2, -PT-4, -PT-7

NOTE B—Before adjusting compensators, turn down (10B) to light position. Then adjust the compensators for maximum output in the following order: 12A, 12B, 10A and 10B.

NOTE C—When adjusting padder outside of cabinet, turn tuning condenser until dial pointer is on the first small line stamped in the scale plate from right side of chassis. Adjust padder (1B) to maximum at this point.

NOTE D—When adjusting padder outside of cabinet, turn tuning condenser until dial pointer is on the second small line stamped in the scale plate from right side of chassis. Adjust padder (1A) to maximum at this point.

MODEL 42-1004

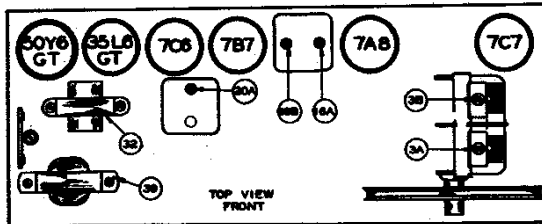


FIG. 1. LOCATIONS OF COMPENSATORS

When aligning the R. F. padders a loop is made from a few turns of wire and connected to the signal generator output terminals; the signal generator is then placed close to the loop of the radio.

The receiver can be adjusted in the cabinet or removed from the cabinet.

When adjusting the radio outside the cabinet the loop aerial should be placed in approximately the same position around or near the chassis as when assembled. A paper aligning scale, Part No. 27-9985, is also attached to the metal dial plate for adjusting the radio outside of the cabinet. The scale is marked with three lines indicating from left to right—"Dial Calibration Point," "580 K.C." and "1500 K.C." After connecting the aligning instruments adjust the compensators as shown in the tabulation below. Locations of the compensators are shown in fig. 1.

If the indicating meter pointer goes off scale when adjusting the compensators, reduce the strength of the signal from the generator.

| Operations in Order | SIGNAL GENERATOR               |              | RECEIVER                     |                 |                              | SPECIAL INSTRUCTIONS |
|---------------------|--------------------------------|--------------|------------------------------|-----------------|------------------------------|----------------------|
|                     | Output Connections to Receiver | Dial Setting | Dial Setting                 | Control Setting | Adjust Compensators in Order |                      |
| 1                   | Ant. Section of tuning         | 455 K.C.     | 540 K.C. Tuning Cond. Closed | Vol. Max.       | 20A, 18B, 16A                |                      |
| 2                   | Loop see above instructions    | 1400 K.C.    | 1400 K.C.                    | Vol. Max.       | 3B, 3A                       | Note A               |

| Operations in Order | SIGNAL GENERATOR MODEL 42-1006 CODE 122 |              | RECEIVER                     |                        |                              | Special Instructions |
|---------------------|-----------------------------------------|--------------|------------------------------|------------------------|------------------------------|----------------------|
|                     | Output Connections to Receiver          | Dial Setting | Dial Setting                 | Control Setting        | Adjust Compensators in Order |                      |
| 1                   | Ant. Section of tuning                  | 455 K.C.     | 540 K.C. Tuning Cond. Closed | Vol. Max. Switch-Radio | 22A, 21B, 21A                |                      |
| 2                   | Loop see above instructions             | 1600 K.C.    | 1600 K.C.                    | Vol. Max. Switch-Radio | 3B, 3A                       | Note A               |

NOTE A:—Dial Calibration: In order to adjust the receiver correctly, the dial must be aligned to track properly with the tuning condenser. To do this, proceed as follows: Turn the tuning condenser to the maximum capacity position (plates fully meshed). With the condenser in this position, set the tuning pointer on the small dot below 540 K.C.