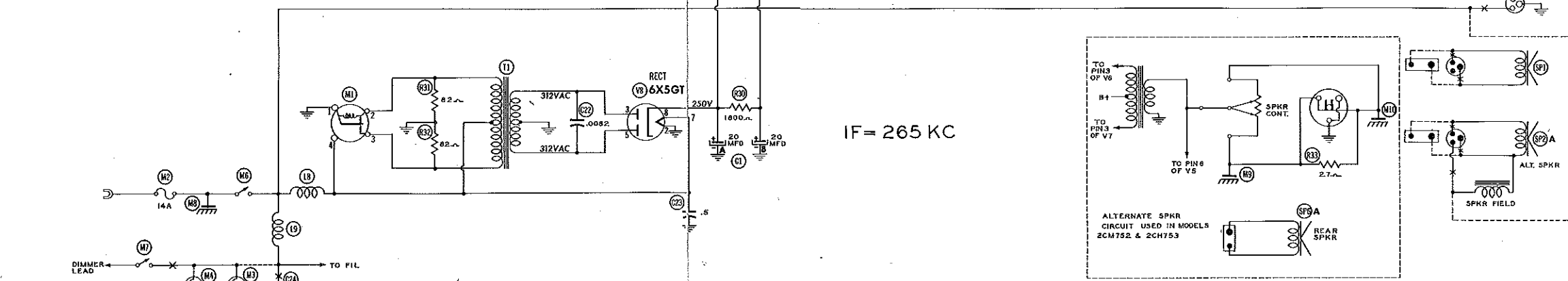


THE COOPERATION OF THE MANUFACTURER OF THIS RECEIVER MAKES IT POSSIBLE TO BRING YOU THIS SERVICE



IF = 265 KC

RESISTANCE READINGS

Item	Tube	Pin 1	Pin 2	Pin 3	Pin 4	Pin 5	Pin 6	Pin 7	Pin 8
V 1	6BA6	2Meg	0Ω	.4Ω	0Ω	†12KΩ	†14KΩ	0Ω	
V 2	6BE6	47KΩ	.8Ω	.4Ω	0Ω	†1.8KΩ	†14KΩ	2.9Meg	
V 3	6BA6	37Ω	0Ω	.4Ω	0Ω	†1.8KΩ	†14KΩ	280Ω	
V 4	6AV6	15Meg	47Ω	.4Ω	0Ω	340KΩ	1Meg	†330KΩ	
V 5	6AV6	6.8Meg	2.7KΩ	0Ω	.4Ω	2Meg	.1Ω	†330KΩ	
V 6	6V6GT	INF	.4Ω	†211Ω	†1.8KΩ	200KΩ	47KΩ	0Ω	330Ω
V 7	6V6GT	INF	0Ω	†211Ω	†1.8KΩ	270KΩ	†14KΩ	.4Ω	330Ω
V 8	6X5GT	INF	.4Ω	210Ω	INF	198Ω	INF	0Ω	28KΩ

† MEASURED FROM PIN 8 OF V8  
 \* TAKEN WITH VACUUM TUBE VOLTMETER

- 1 - DC Voltage measurements are at 20,000 ohms per volt, AC Voltages measured at 1000 ohms per volt.
- 2 - Socket connections are shown as bottom views
- 3 - Measured values are from socket pin to common negative.
- 4 - Battery voltage maintained at 6.3 volts for voltage readings.
- 5 - Nominal tolerance on component values makes possible a variation of ±15% in voltage and resistance readings.
- 6 - Volume control at maximum, no signal applied for voltage measurements.

**FORD MODELS 2CF754 (FAC-18805-B), 2CH753 (FAA-18805-A), (FAB-18805-A)**

TRADE NAME Ford Model  
 MANUFACTURER Sylvania EI  
 TYPE SET Battery Op  
 TUBES (EIGHT) Types 6BA6 (2) 6V6GT

POWER SUPPLY 6 Volt Storage  
 TUNING RANGE—BROADCAST

Volume control should be at full output reading. Use an insulated screwdriver to rotate tone control to full clockwise position.

DUMMY ANTENNA	SIGNAL GENERATOR COUPLING
1. .1MFD	High side to Pin 7 (Converter Grid) 6BE6 (V2). Low side to chassis.
2. Fig. 1	High side through dummy to antenna socket. Low side to chassis.

The following adjustments should be made:

2A	Fig. 1	High side through dummy to antenna socket. Low side to chassis.
3.	"	"
4.	"	"

With Receiver installed and volume on a weak station