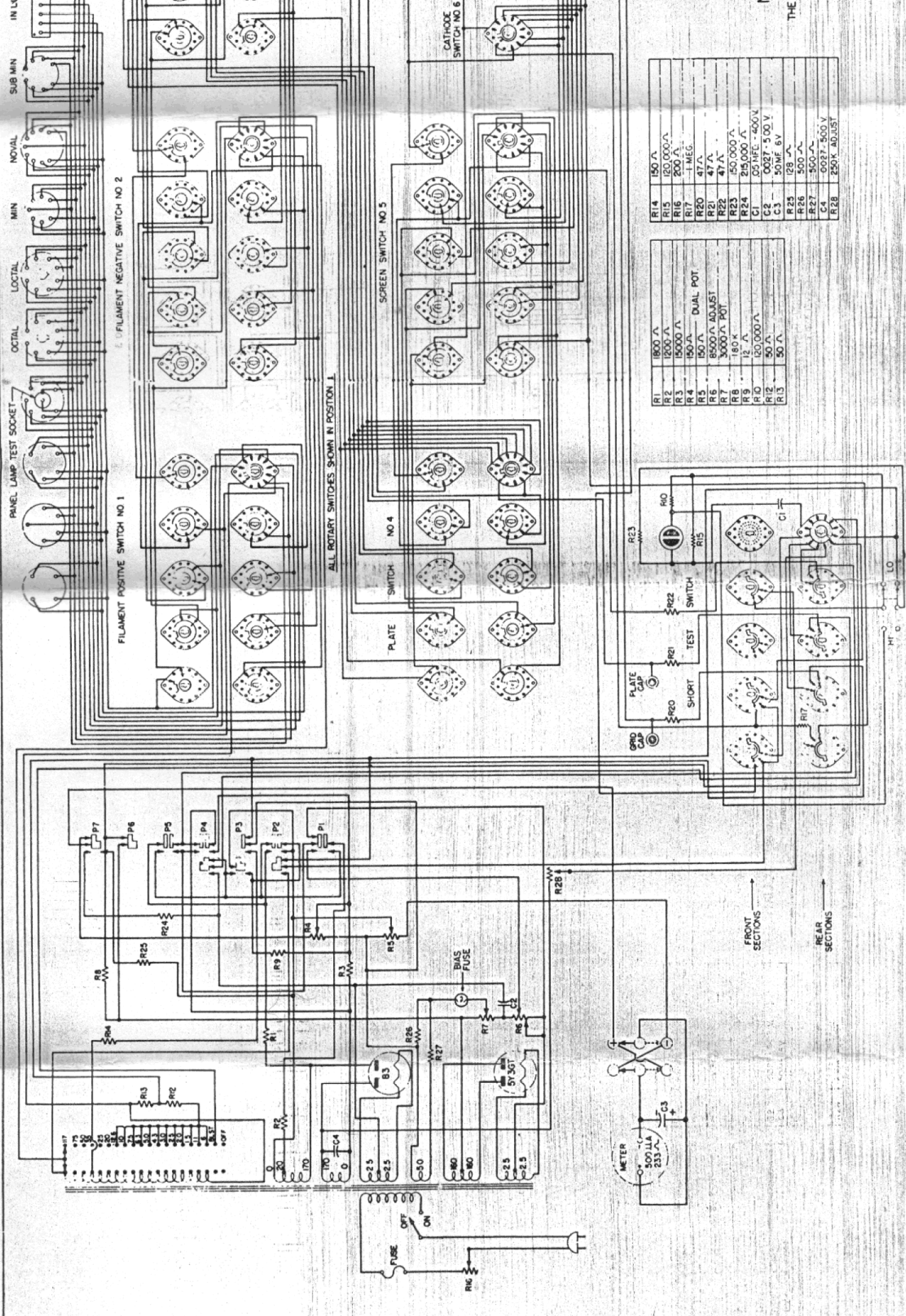


R14	150 Ω
R15	150,000 Ω
R16	200 Ω
R17	1 MEG
R20	47 Ω
R21	47 Ω
R22	47 Ω
R23	150,000 Ω
R24	215,000 Ω
R9	12 Ω
R10	150,000 Ω
R12	50 Ω
R13	50 Ω
R25	129 Ω
R26	500 Ω
R27	500 Ω
C1	0.05 MFD - 450V
C2	0.027 - 500 V
C3	50 MFD 6V
R28	250K ADJUST

R1	1800 Ω
R2	1200 Ω
R3	15000 Ω
R4	150 Ω
R5	150 Ω
R6	8500 Ω ADJUST
R7	3000 Ω POT
R8	180 Ω
R9	12 Ω
R10	150,000 Ω
R11	50 Ω
R13	50 Ω

SCHEMATIC
MODEL 600A TUBE TESTER
MADE BY
THE HICKOK ELECTRICAL INSTRUMENT COMPANY
CLEVELAND, OHIO



IN
SUB MIN
NOVAL
MIN
LOCTAL
OCTAL
PANEL LAMP TEST SOCKET

FILAMENT POSITIVE SWITCH NO 1

FILAMENT NEGATIVE SWITCH NO 2

ALL ROTARY SWITCHES SHOWN IN POSITION 1.

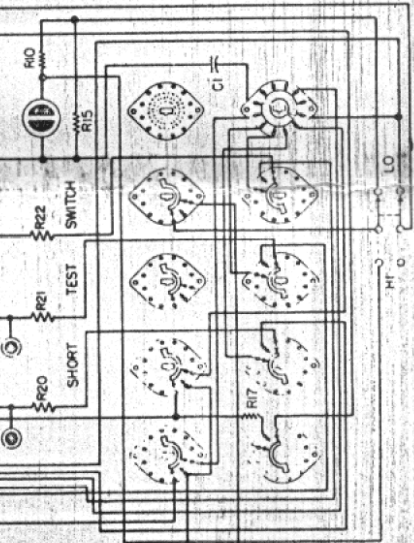
PLATE SWITCH NO 4

SCREEN SWITCH NO 5

CATHODE SWITCH NO 6

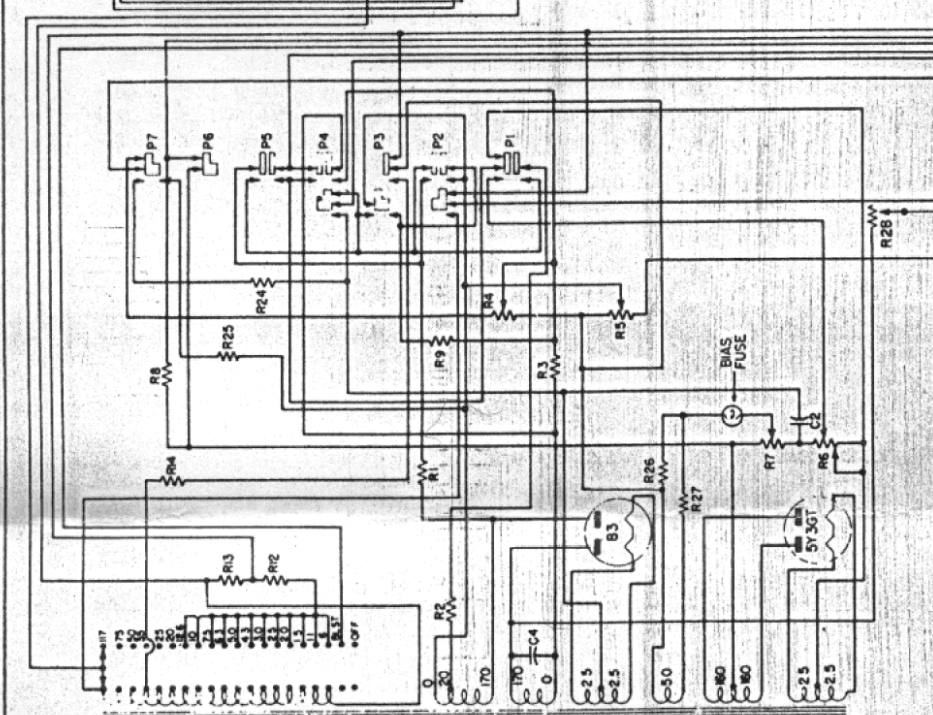
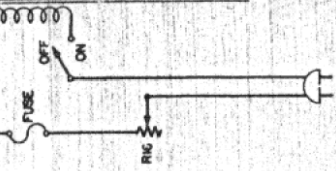
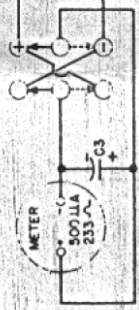
R14	150 Ω
R15	120,000 Ω
R16	200 Ω
R17	1 MEG
R20	47 Ω
R21	47 Ω
R22	47 Ω
R23	50,000 Ω
R24	215,000 Ω
C1	.05 MFD - 400V
C2	.0027 - 500V
C3	50 MFD 6V
R25	128 Ω
R26	500 Ω
R27	500 Ω
C4	.0027 - 500V
R28	250 Ω ADJUST

R1	1800 Ω
R2	1200 Ω
R3	15000 Ω
R4	150 Ω
R5	80 Ω
R6	800 Ω ADJUST
R7	3000 Ω POT.
R8	180 Ω
R9	12 Ω
R10	120,000 Ω
R12	50 Ω
R13	50 Ω



FRONT SECTIONS

REAR SECTIONS



K4XL's **BAMA**

This manual is provided **FREE OF CHARGE** from the "BoatAnchor Manual Archive" as a service to the Boatanchor community.

It was uploaded by someone who wanted to help you repair and maintain your equipment.

If you paid anyone other than BAMA for this manual, you paid someone who is making a profit from the free labor of others without asking their permission.

You may pass on copies of this manual to anyone who needs it. But do it without charge.

Thousands of files are available without charge from BAMA. Visit us at <http://bama.sbc.edu>