

## Philco Radio & Television Corp.

**Model:** 46-1203

**Chassis:**

**Year:** Pre 1948

**Power:**

**Circuit:**

**IF:**

**Tubes:**

**Bands:**

### Resources

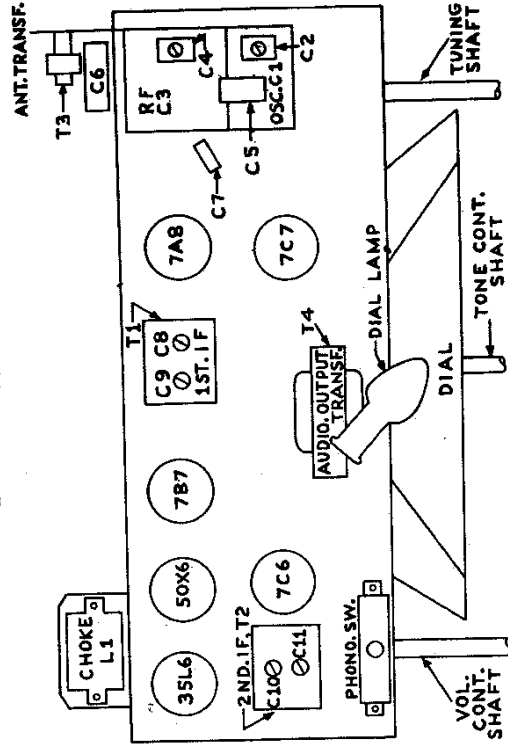
[Riders Volume 16 - PHILCO 16-12](#)

[Riders Volume 16 - PHILCO 16-13](#)

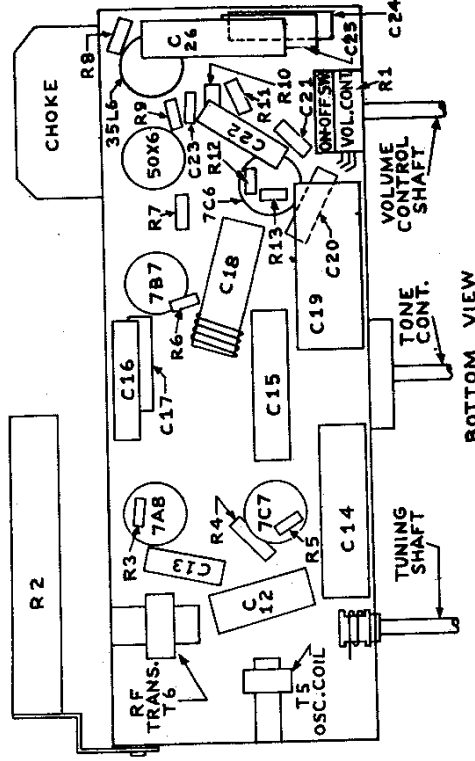
[Riders Volume 16 - PHILCO 16-14](#)



## PHILCO CORP.



TOP VIEW



BOTTOM VIEW

## ALIGNMENT

This receiver may be aligned with the chassis in the cabinet.

Connect the output meter to the center terminal (Low) and the right terminal (High) of the three lug terminal strip mounted on the rear of the chassis.

Connect the signal generator to the standard Hazeltine loop Model 1150 and couple it loosely to the receiver loop. Set the volume control at maximum, and fully mesh the tuning condenser.

The output of the signal generator should be just sufficient to give a readable deflection on the output meter.

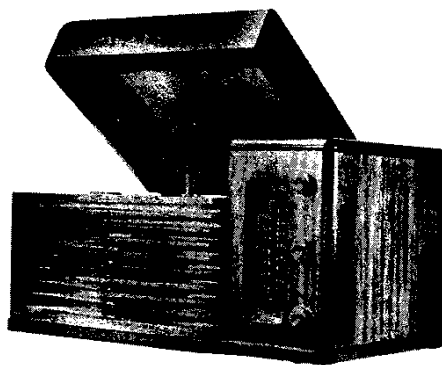
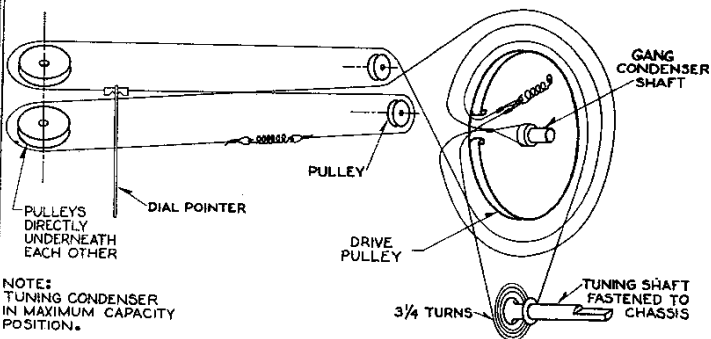
Set the signal generator to 455 KC and adjust the IF trimmers for maximum output in the following order: C11, C10, C9, C8.

Set the signal generator and receiver to 1600 KC and adjust the oscillator trimmer C2 for maximum output.

Set the signal generator and receiver to 1400 KC and adjust the RF trimmer C4 for maximum output.

MODEL 46-1203

PHILCO CORP.



NOTE:  
TUNING CONDENSER  
IN MAXIMUM CAPACITY  
POSITION.

SOCKET	PIN NO.	VTVM	20,000 $\Omega$ / P.V.	1,000 $\Omega$ / P.V.	RESISTANCE
7C7 RF	1	100 V	100 V	100 V	OVER 5 MEG
	2	170 V	165 V	165 V	OVER 5 MEG
	3	115 V	108 V	108 V	OVER 5 MEG
	4	-4.5 V	-2.2 V	-2 V	2.8 MEG
	5	0 V	0 V	0 V	0
	6	-1.3 V	-0.3 V	0 V	3.8 MEG
	7	1.3 V	0.8 V	.8 V	190 $\Omega$
	8	100 V	100 V	100 V	OVER 5 MEG
7A5 CONVERTER	1	100 V	100 V	100 V	OVER 5 MEG
	2	167 V	160 V	160 V	OVER 5 MEG
	3	113 V	110 V	110 V	OVER 5 MEG
	4	-12.5 V	-4.4 V	-2 V	130 K
	5	65 V	65 V	56 V	OVER 5 MEG
	6	-4.5 V	-2 V	-0.2 V	2.8 MEG
	7	1.3 V	0.8 V	0.9 V	190 $\Omega$
	8	100 V	100 V	100 V	OVER 5 MEG
7B7 IF	1	100 V	100 V	100 V	OVER 5 MEG
	2	170 V	160 V	160 V	4.4 MEG
	3	65 V	65 V	57 V	4.6 MEG
	4	0 V	0 V	0 V	0
	5	0 V	0 V	0 V	0
	6	-1.5 V	-0.4 V	-0.2 V	2.8 MEG
	7	0	0	0	0
	8	100 V	100 V	100 V	OVER 5 MEG
7C6 AVC DETECTOR	1	100 V	100 V	100 V	OVER 5 MEG
	2	78	74	35	OVER 5 MEG
	3	-0.8 V	-0.5 V	-0.2 V	10 MEGS.
	4	0 V	0 V	0 V	0
	5	-4.4 V	-1.2 V	-0.2 V	2.8 MEG
	6	-4.3 V	-1.5 V	-0.8 V	600 K
	7	0 V	0 V	0 V	0
	8	100 V	100 V	100 V	OVER 5 MEG
35L6GT/G	1	0 V	0 V	0 V	0
	2	100 V	100 V	100 V	OVER 5 MEG
	3	155 V	150 V	150 V	OVER 5 MEG
	4	118 V	115 V	115 V	OVER 5 MEG
	5	0 V	0 V	0 V	500 K
	6	173 V	165 V	165 V	OVER 5 MEG
	7	100 V	100 V	100 V	OVER 5 MEG
	8	7.9 V	7.6 V	7.8 V	190 $\Omega$
50X6 RECTIFIER	1	100 V	100 V	100 V	OVER 5 MEG
	2	100 V	100 V	100 V	OVER 5 MEG
	3	0 V	0 V	0 V	0
	4	173 V	170 V	170 V	OVER 5 MEG
	5	120 V	115 V	110 V	OVER 5 MEG
	6	100 V	100 V	100 V	OVER 5 MEG
	7	200 V	200 V	200 V	OVER 5 MEG
	8	100 V	100 V	100 V	OVER 5 MEG

With respect to B-: Line Voltage 116 V

On-Off switch in off position Volume control at minimum

Radio-Phone switch on radio Tone control in left (counterclockwise position)